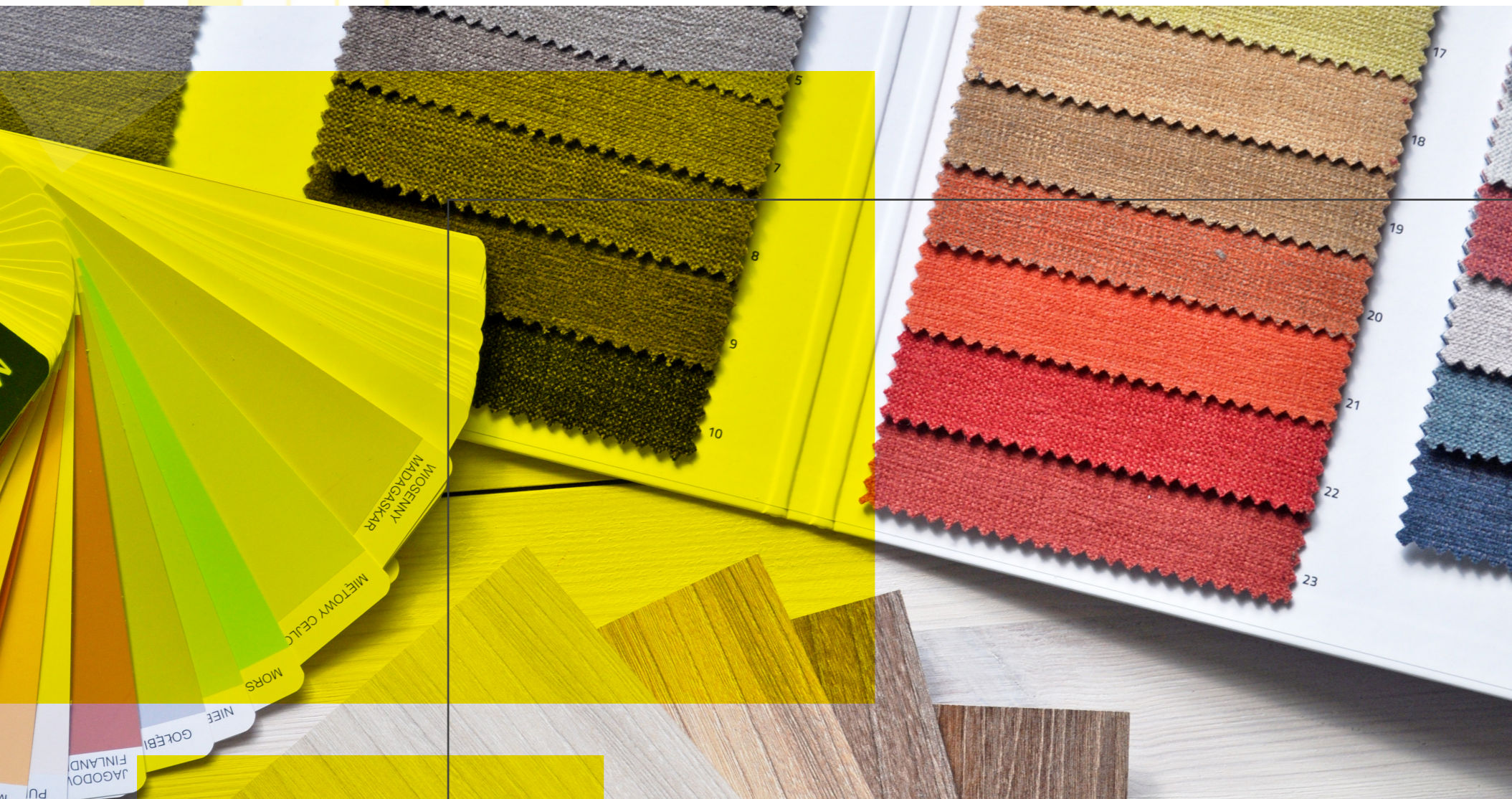


FERRANTI INTERIORS



YOUR HOME SHOULD BE YOUR SANCTUARY, A PLACE FOR YOU AND YOUR FAMILY TO RECHARGE, RELAX AND GROW.

FERRANTI INTERIOR DESIGN SERVICES ALLOW YOU TO BE IN CONTROL OF YOUR DESIGN AND PROJECT MANAGEMENT.

DIAMOND DESIGN PACKAGE
YOUR JOURNEY STARTS HERE
PRICE:£1399



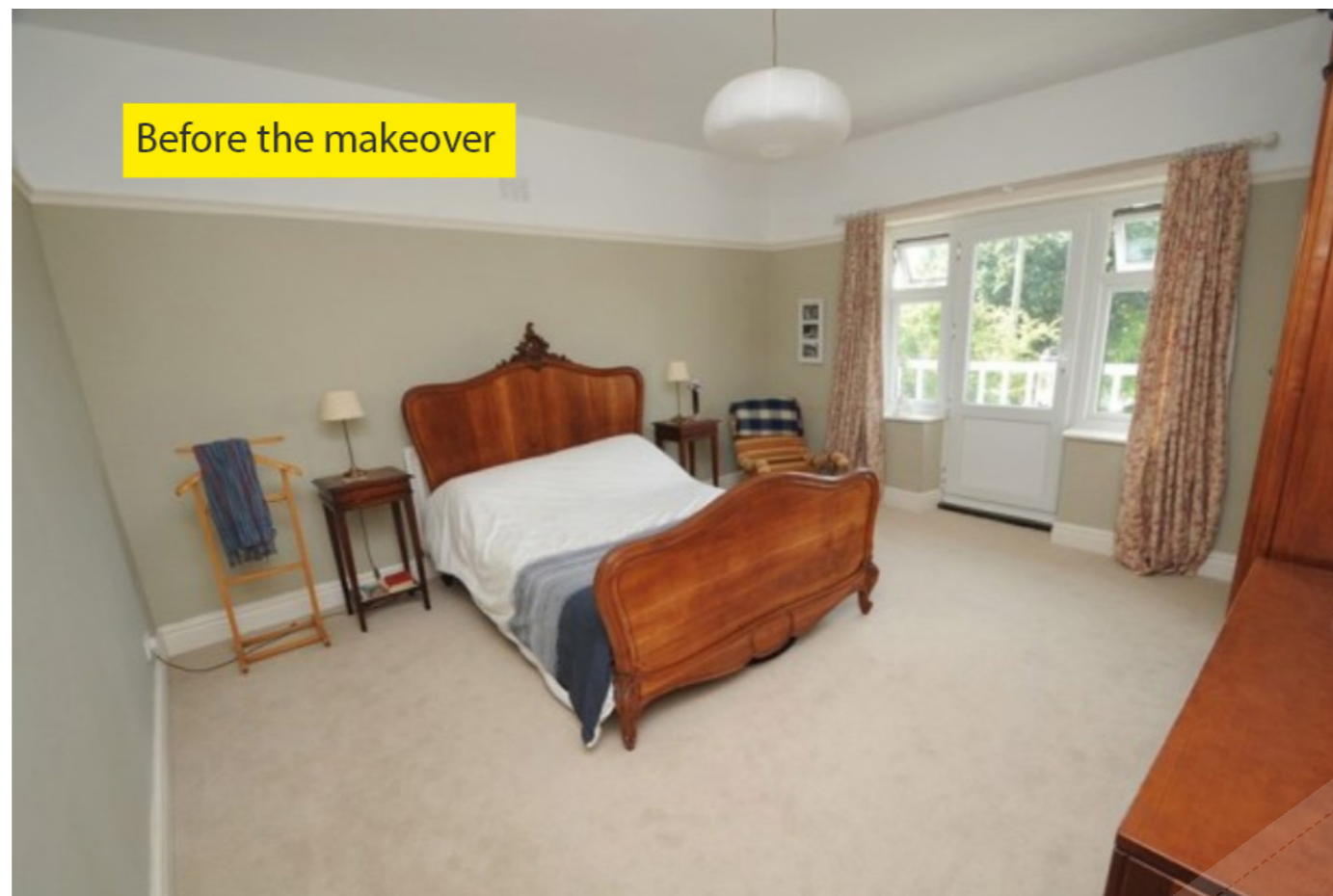
YOUR GOAL

INTERIOR DESIGNER

CLIENTS BRIEF

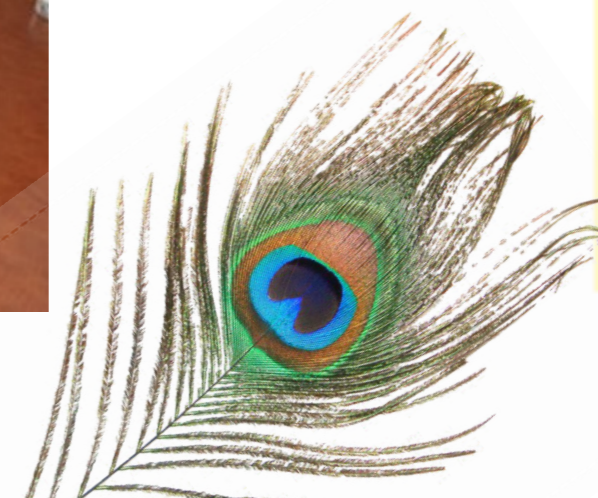
1. Recreate the tired Edwardian bedroom into a contemporary design to make it feel modern, fresh and bright.
2. Require more storage, preferably fitted wardrobe space.
3. This main bedroom is used daily and must include an area for dressing and a make-up area.
4. A hidden area for secure storage would be an exciting twist.
5. Canovas and Colefax interiors would be highly preferable. but also open to 'fun' wallpaper and 'fun' artwork, such as Contemporary art by Mackenzie Thorp.

Before the makeover



BUDGET £9,000

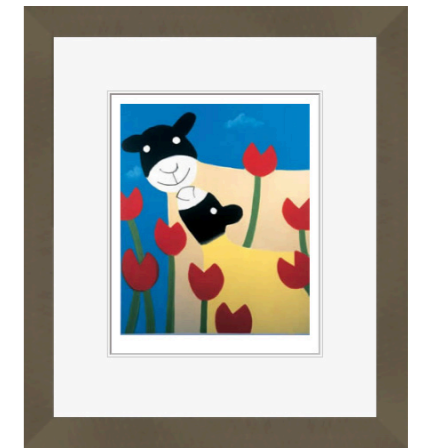
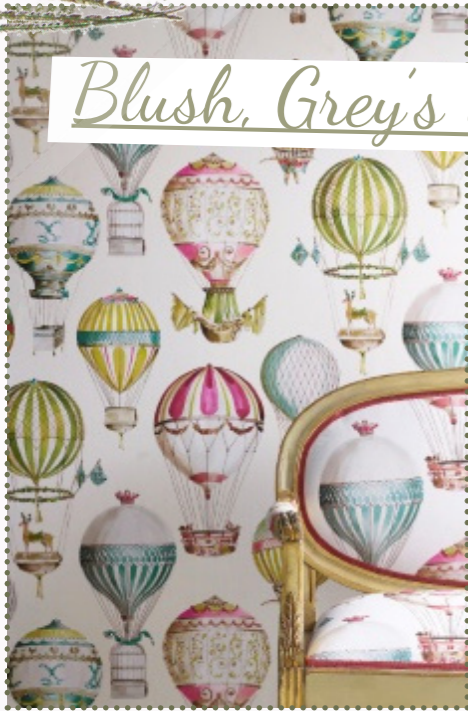
Master bedroom

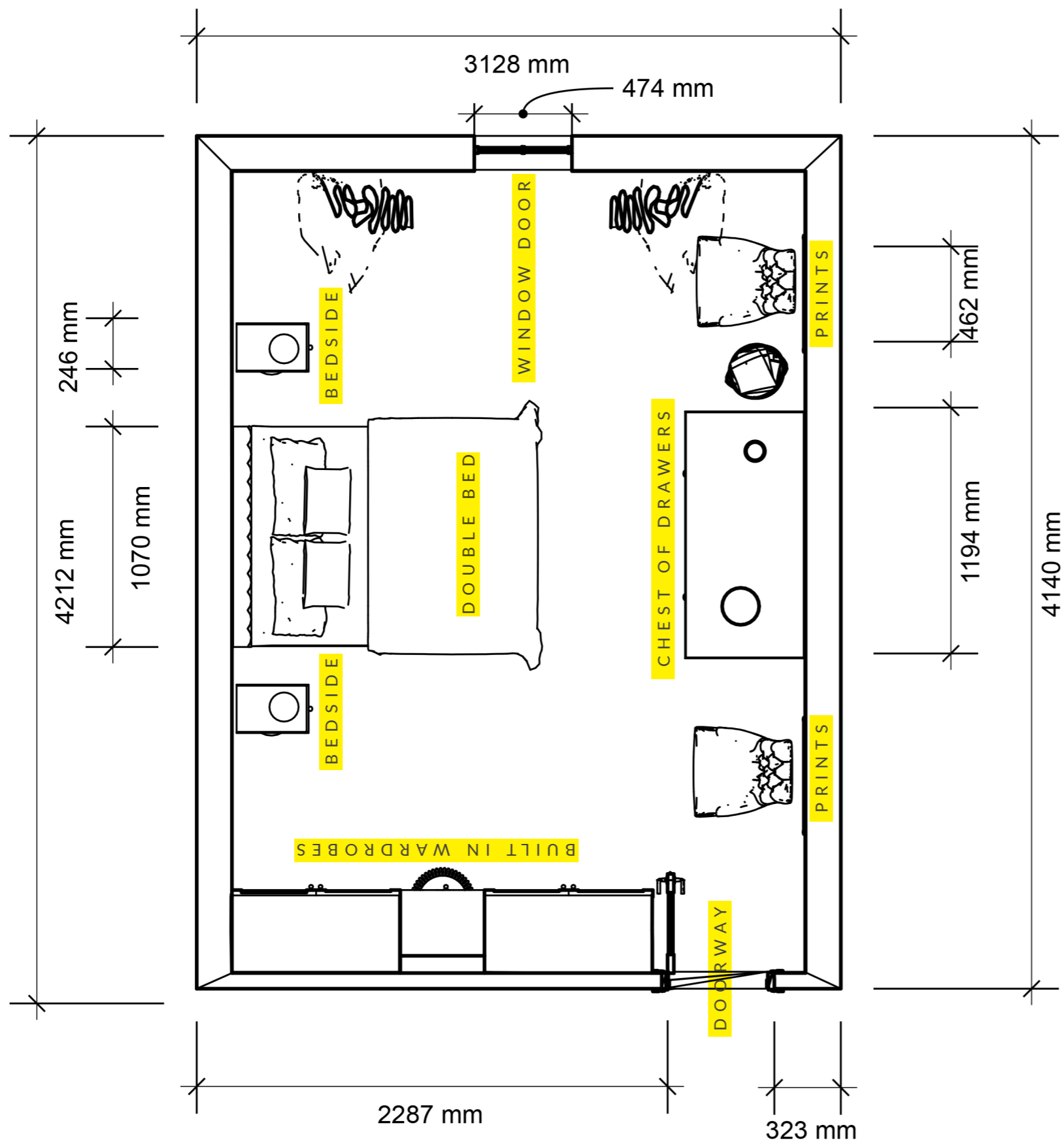


THE MOODBOARD

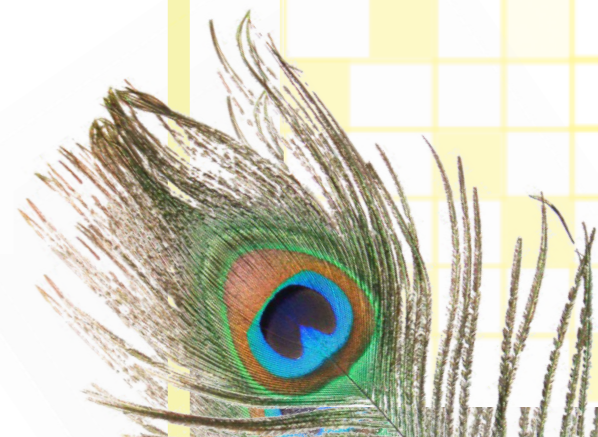
FERRANTI INTERIORS

Blush, Grey's & Greens





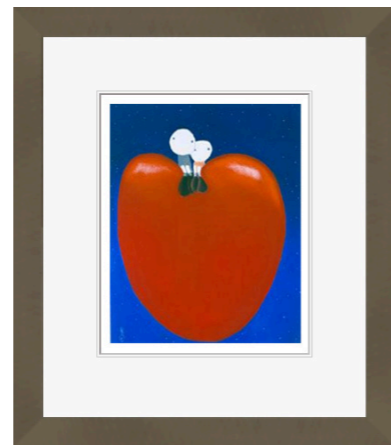
1 Bedroom Plan View
Scale: 1:50





L'Envol Wallpaper
by Manuel Canovas
per roll
£126.40

[Shop Here](#)



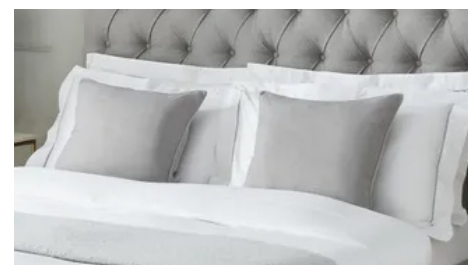
Print
per roll
£XXX

[Shop Here](#)



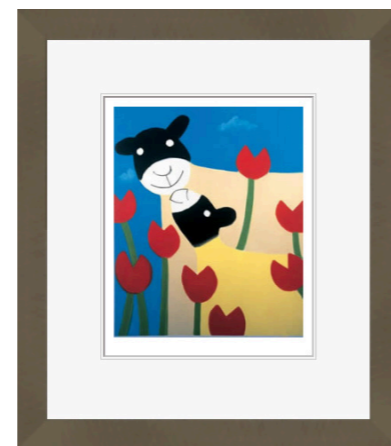
Vintage Mirror
Ebay
£XXX

[Shop Here](#)



Dusk Bed
£449.00

[Shop Here](#)



Print
per roll
£XXX

[Shop Here](#)



Chair
Ebay
£XXX

[Shop Here](#)



Flowers
£XXX

[Shop Here](#)



John Lewis
£49.00

[Shop Here](#)



Laundry
per roll
£XXX

[Shop Here](#)



[Shop Here](#)



Flowers
£XXX

[Shop Here](#)



Silk Curtains
by Manuel Canovas
per roll
£228.40

[Shop Here](#)



Dresser
£XXX

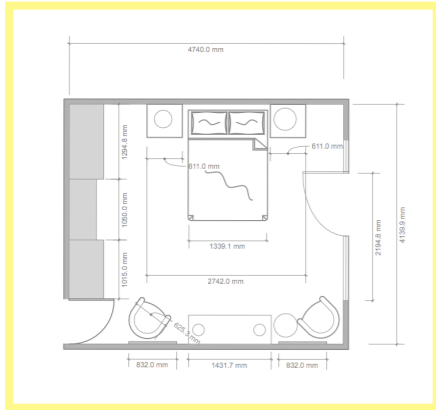
[Shop Here](#)



Paint
£XXX

[Shop Here](#)

Bedroom



1. L'Envol Wallpaper BY MANUEL CANOVAS
2. Bed by DUSK
3. JOHN LEWIS Lamps
4. Prints Contemporary art by Mackenzie Thorp. ART GALLERY
5. Silk Curtains BY MANUEL CANOVAS
6. Flowers from BLOOM
7. Vintage Mirror from EBAY
8. Chest of Drawers from vintage ANTIQUE SHOP ISLINGTON
9. Edwardian chairs from EBAY
10. Laundry Basket AMAZON
11. JOHN LEWIS Bed-Side Tables
12. Paint DULUX



1



5

8



2



9



6



3



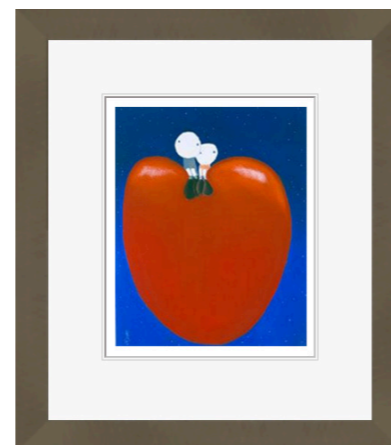
7



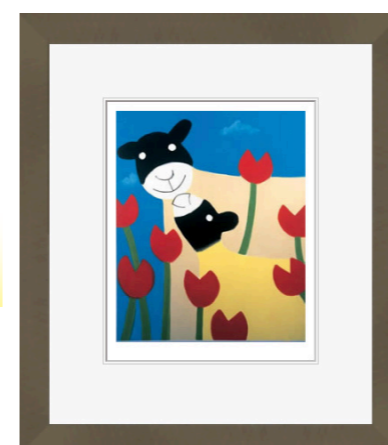
10



11



4



12

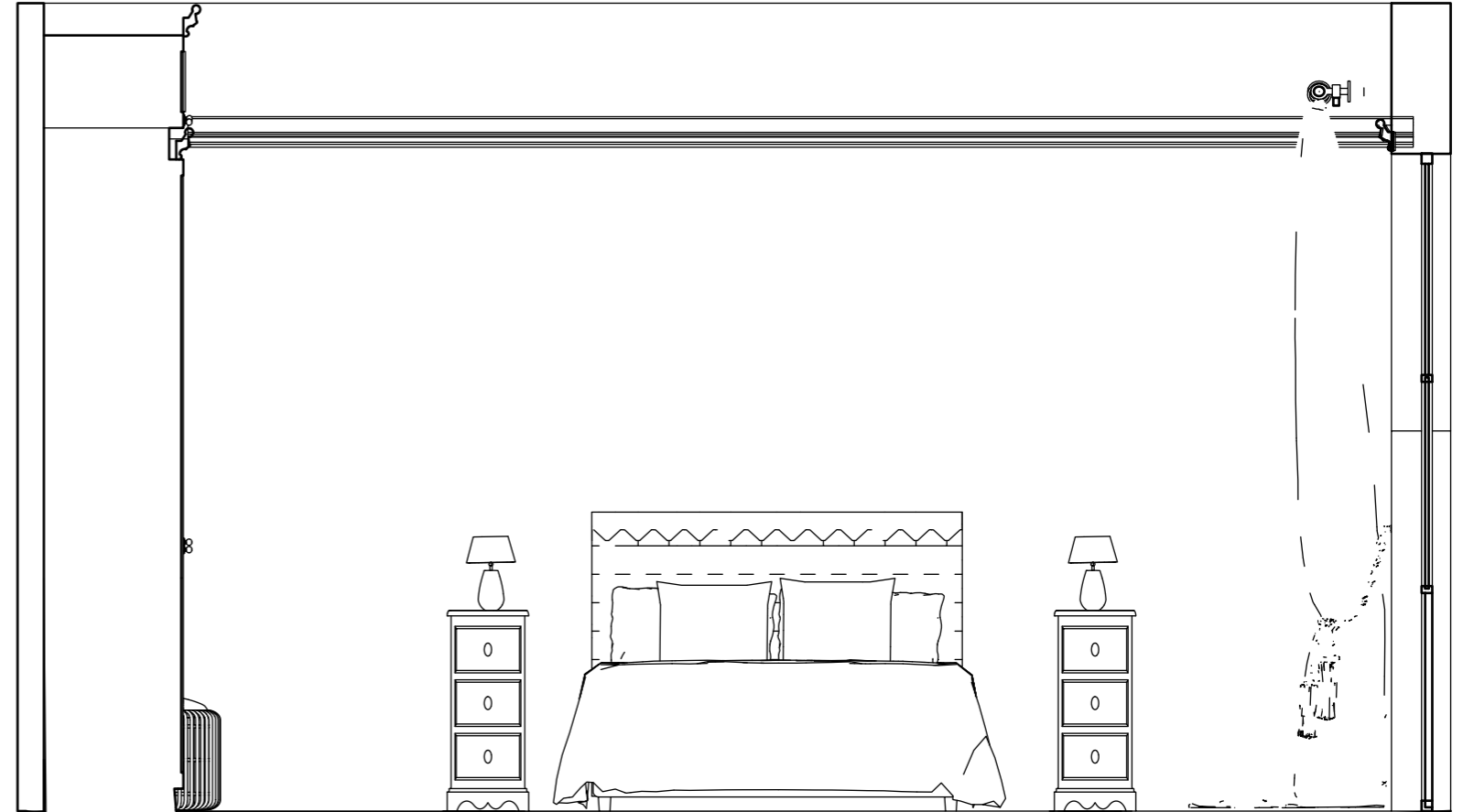




Plan View from above



West facing Side



East facing Side

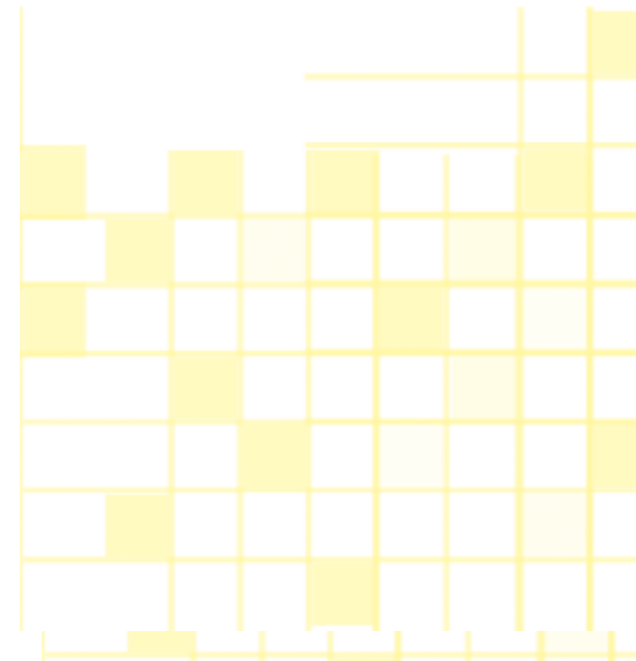


The walk and look around views





TOP VIEW





The Love me and kiss prints are to be hung on the wall to the right of the door (facing the bed), as shown in the 3D renderings. Hang the painting so that the bottom of the painting is line with the top of the chairs table, so the paintings are at the same eye-level.



The chest of Drawers is placed on the right wall as you walk into the room. Chairs should be placed on each side with the prints directly above the chairs. The flowers are placed on each side of the chest (Look at layout on floor plan). The Mirror is placed centrally and to the rear of the chest, maximising usable top space.



The Edwardian chairs are to be placed under prints and either side of chest of drawers, as shown in the 3D renderings. Accessorise with a cute teddy of your childhood or you favourite throw. Laundry basket place next to the chair. (Look at layout and 3D Rendering).



The bed is to be centralised to the left wall. This back wall is covered with the airballoon wallpaper. Best not to place any prints on this wall otherwise it will look too busy. Accessorise your bed with a beautiful Dusk grey throw and John Lewis green cushions. (Please see layout and 3D Rendering).



These lightshades are to be place centrally on each bed-side table. With appropriate wifi connected lightbulbs you can dim the lighting and choose from endless lighting colours to suit your mood.



These white painted bed-side tables are positioned on each side of the bed. Ensure they are placed close to the bed, so you can reach the light switch and they don't obstruct the fitted wardrobe doors.



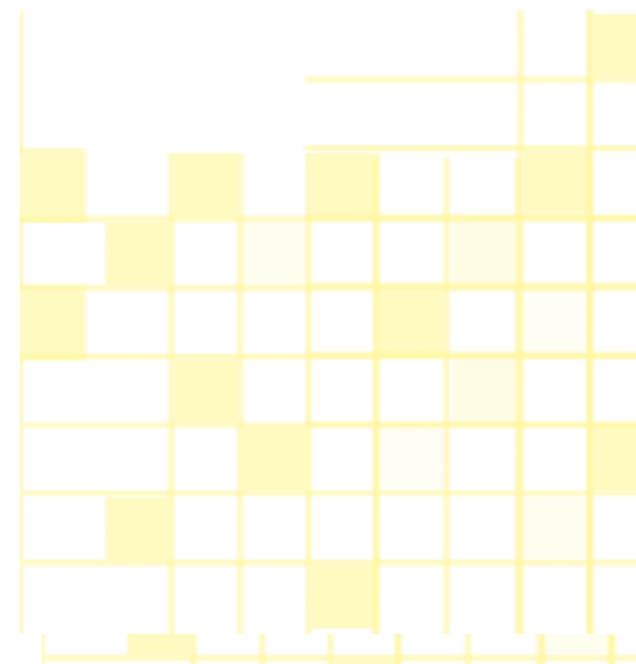
VIDEO WALK THROUGH IN 3D

CLICK HERE TO VIEW VIDEO

*This is not working at the moment (will be on your PDF)
please see website for Walkthrough video example.*

VIDEO WALK THROUGH IN 3D

Creating Beautiful Spaces



Creating Beautiful Spaces



SAMPLE OF THIS MAKE-OVER!

*This is not included in your package.
This is just an example of this final sample space.*

Creating Beautiful Spaces

FERRANTI INTERIORS

FERRANTI INTERIORS
BY YOLANDA FERRANTI

Please Don't forget to send me pictures of your final project as I love to see how clients complete their own design journey.

DIMOND DESIGN PACKAGE
YOUR JOURNEY ENDS HERE

Creating Beautiful Spaces

IMAGE SOURCES
COVER IMAGES
www.pexels.com by Designecologist